

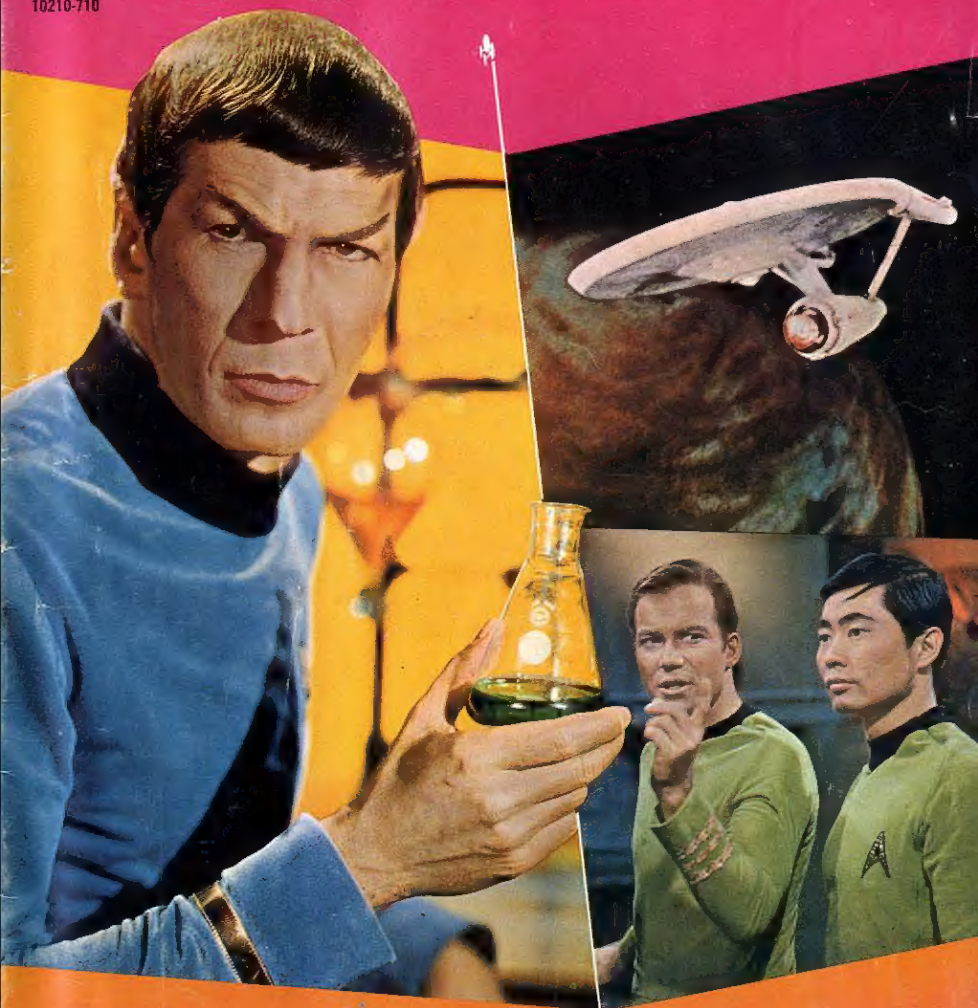
GOLD  
KEY

STAR TREK

# STAR TREK

12c

10210-710

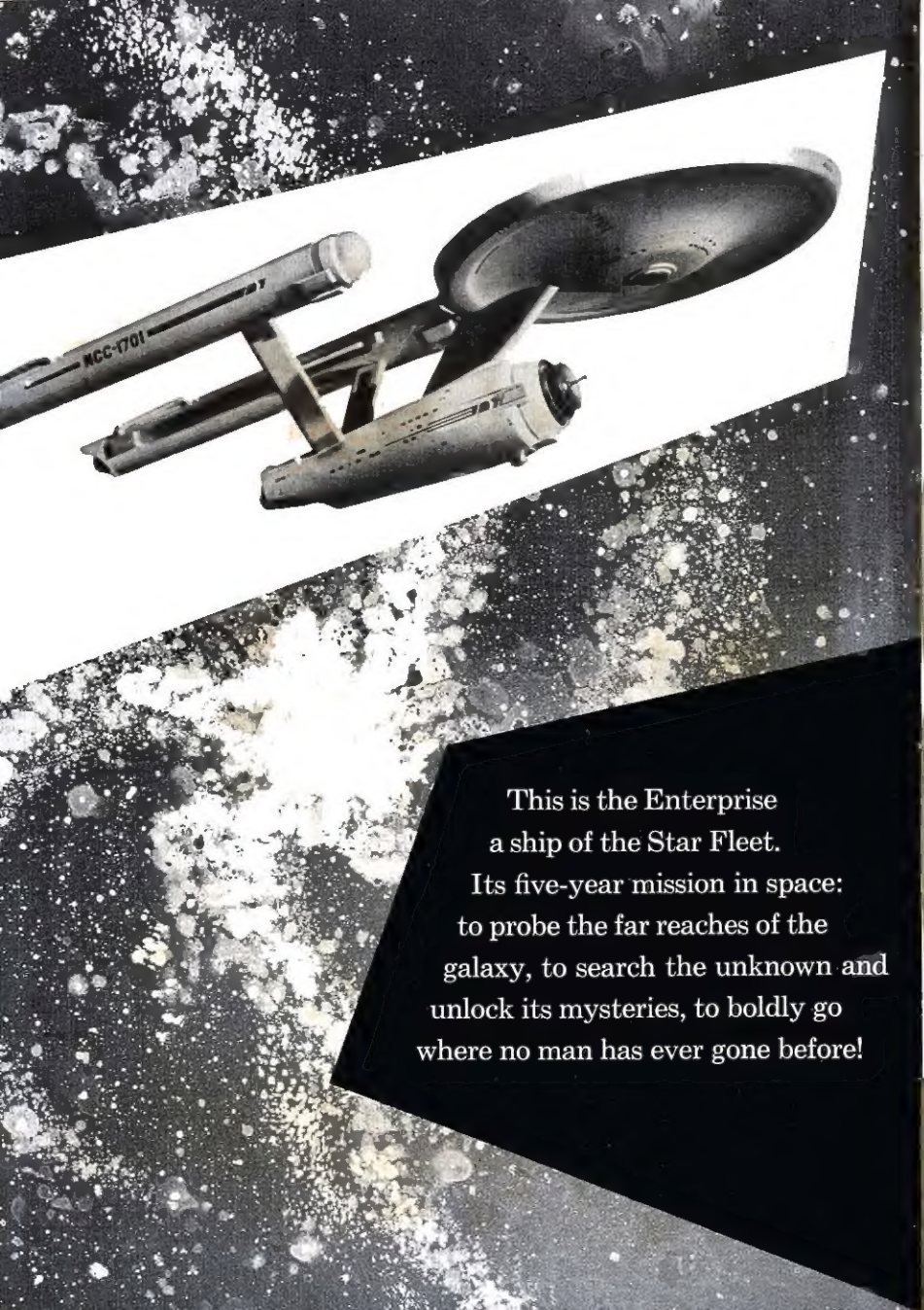


An expedition team  
discovers its secret—too late...

**K-G,  
PLANET  
OF DEATH!**

© 1967 BY DESILU PRODUCTIONS, INC.



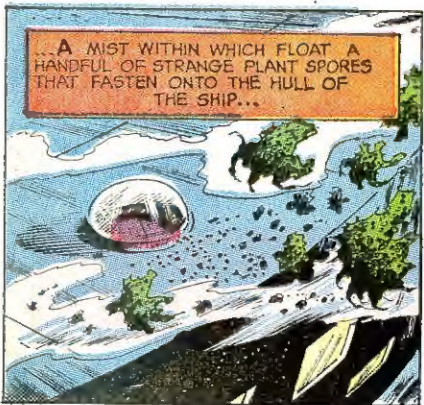
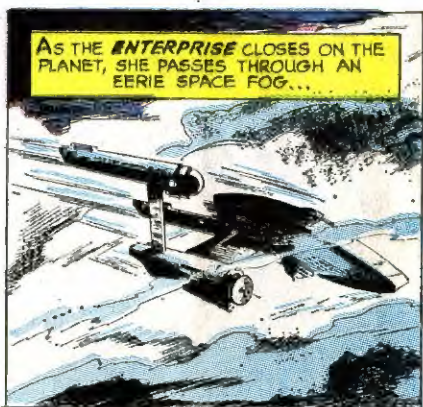


This is the Enterprise  
a ship of the Star Fleet.  
Its five-year mission in space:  
to probe the far reaches of the  
galaxy, to search the unknown and  
unlock its mysteries, to boldly go  
where no man has ever gone before!



STAR TREK, No. 1. Published by K.K. Publications, Inc., North Road, Poughkeepsie, New York 12602. All rights reserved throughout the world. Authorized edition. Designed, produced and printed in the U.S.A. by Western Printing and Lithographing Company. Copyright © 1967, by Dasilu Productions, Inc.



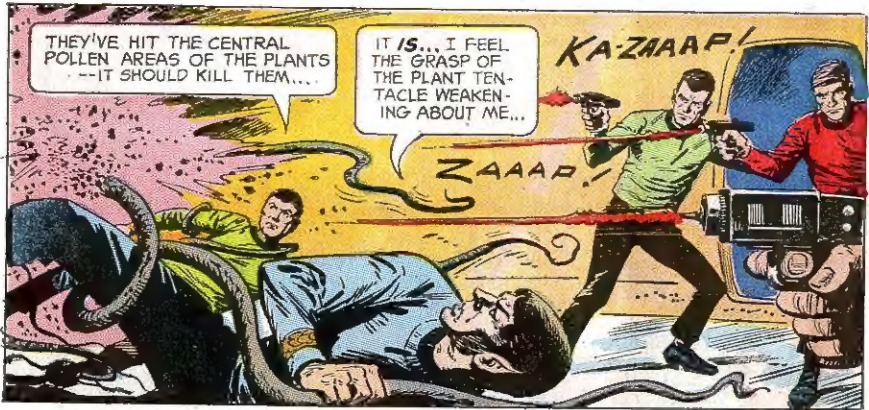






W-WHAT IS IT...?

DON'T ASK QUESTIONS!  
THE THINGS ARE ABOUT  
TO DEVOUR THE DOCTOR  
AND MR. SPOCK! FIRE! FIRE!



THEY'VE HIT THE CENTRAL  
POLLEN AREAS OF THE PLANTS  
--IT SHOULD KILL THEM...

IT IS... I FEEL  
THE GRASP OF  
THE PLANT TENTA-  
CLE WEAKEN-  
ING ABOUT ME...

K-A-ZAAP!

ZAAAP!



YOU ARE TO BE  
COMMENDED, GUARDS  
--YOU... SAVED OUR  
LIVES!

HOW'D THAT  
THING GET IN  
HERE, ANYWAY,  
MR. SPOCK?



THAT IS SOMETHING  
THAT MUST BE  
LEARNED--WE MUST  
KNOW THE CAUSE  
TO FIND THE CURE--  
THE PREVENTATIVE!

WE'D BETTER  
REPORT THIS  
TO THE CAPTAIN  
AT ONCE! NO  
TELLING WHEN  
OR WHERE  
THOSE PLANT  
CREATURES  
WILL CROP  
UP AGAIN!



AN EMERGENCY CONFERENCE  
IS HELD! AND SOON AFTER...

SURELY, YOU MEN OF SCIENCE  
MUST HAVE SOME IDEA--A  
LEAD TO HOW SUCH A FREAK  
OCCURRENCE LIKE THIS COULD  
HAPPEN...

I HAVE ONE  
THOUGHT--WEEKS  
AGO WE SPACE-  
TESTED BOTH THE  
GUINEA PIGS *OUTSIDE*  
THE SHIP...



IT IS QUITE POSSIBLE, IN THIS  
UNKNOWN GALAXY, THAT THEY  
PICKED UP ALIEN SPORES...

AND THESE SPORES, AFTER A  
PERIOD OF TIME, REACTED ON THE  
ANIMALS PHYSICALLY AND BROUGHT  
ABOUT THE TRANSFORMATION! AN  
EXCELLENT THEORY, MR. SPOCK!

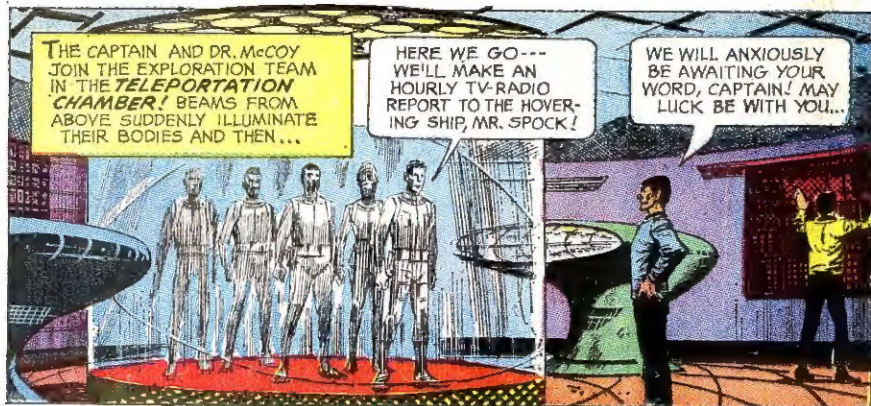


I'LL RUN A SERIES OF  
TESTS ON THE PLANT  
REMAINS WHILE YOU  
GENTLEMEN ARE ON  
THE EXPLORATION  
MISSION!

WHICH REMINDS  
ME--IT'S NEARLY  
"D" HOUR! WE'D  
BETTER GET A  
MOVE ON, DOCTOR!

"D" HOUR--DEPARTURE TIME.

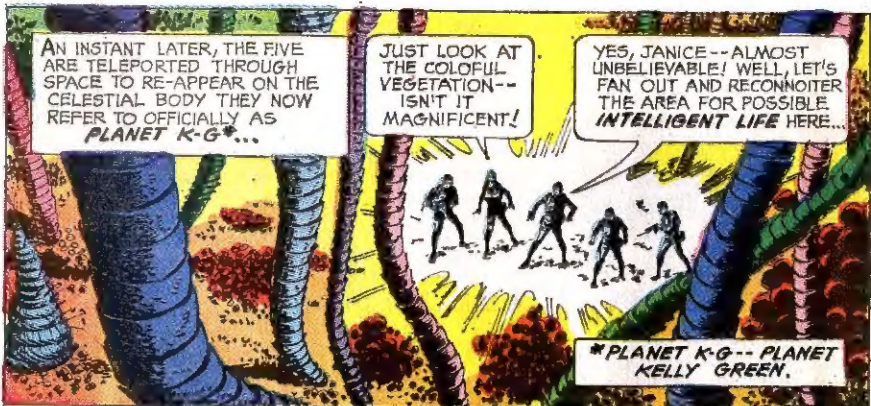




THE CAPTAIN AND DR. MCCOY JOIN THE EXPLORATION TEAM IN THE TELEPORTATION CHAMBER! BEAMS FROM ABOVE SUDDENLY ILLUMINATE THEIR BODIES AND THEN...

HERE WE GO--- WE'LL MAKE AN HOURLY TV-RADIO REPORT TO THE HOVERING SHIP, MR. SPOCK!

WE WILL ANXIOUSLY BE AWAITING YOUR WORD, CAPTAIN! MAY LUCK BE WITH YOU!

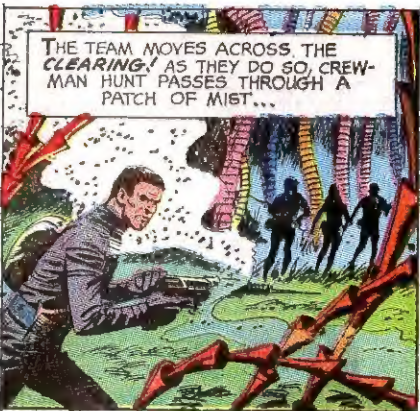


AN INSTANT LATER, THE FIVE ARE TELEPORTED THROUGH SPACE TO RE-APPEAR ON THE CELESTIAL BODY THEY NOW REFER TO OFFICIALLY AS PLANET K-G\*

JUST LOOK AT THE COLORFUL VEGETATION-- ISN'T IT MAGNIFICENT!

YES, JANICE-- ALMOST UNBELIEVABLE! WELL, LET'S FAN OUT AND RECONNOITER THE AREA FOR POSSIBLE INTELLIGENT LIFE HERE...

\*PLANET K-G-- PLANET KELLY GREEN.

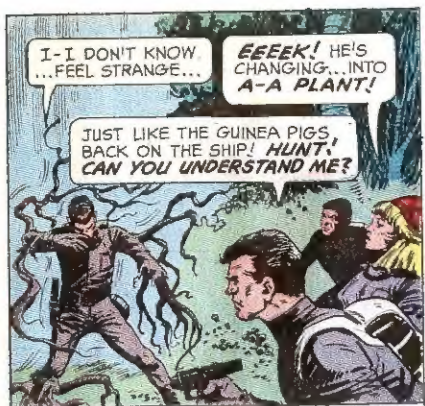


THE TEAM MOVES ACROSS THE CLEARING! AS THEY DO SO, CREWMAN HUNT PASSES THROUGH A PATCH OF MIST...



AND AS THE GROUP REACHES THE THICK, MULTICOLORED FOLIAGE...

ALL RIGHT--NOW WE'LL REGROUP AND... HUNT! WHAT IN HEAVEN HAS HAPPENED TO YOU?



I-I DON'T KNOW... FEEL STRANGE...

EEEK! HE'S CHANGING... INTO A-A PLANT!

JUST LIKE THE GUINEA PIGS, BACK ON THE SHIP! HUNT! CAN YOU UNDERSTAND ME?



BUT THERE IS NO TIME FOR A REPLY-- FOR AT THAT MOMENT...

HEY! SOMETHING'S DRAWING US BACK... BUT WHAT?

DON'T KNOW, DEAN... BUT THE FORCE IS TOO STRONG TO RESIST...



THEN, TERROR SHAKES THE FOURSOME AS...

HOWLING COMETS! THIS SUCTION FORCE IS BEING CREATED BY A GIANT CANNIBAL PLANT! AND IT DREW THE WEAPONS RIGHT-OUT OF OUR HANDS!

TRY.. TRY TO BREAK FREE... OR THE THING WILL DEVOUR US IN SECONDS!



IT'S NO USE... THE MONSTER'S GOT US ALL...

WHAT A WAY TO DIE!

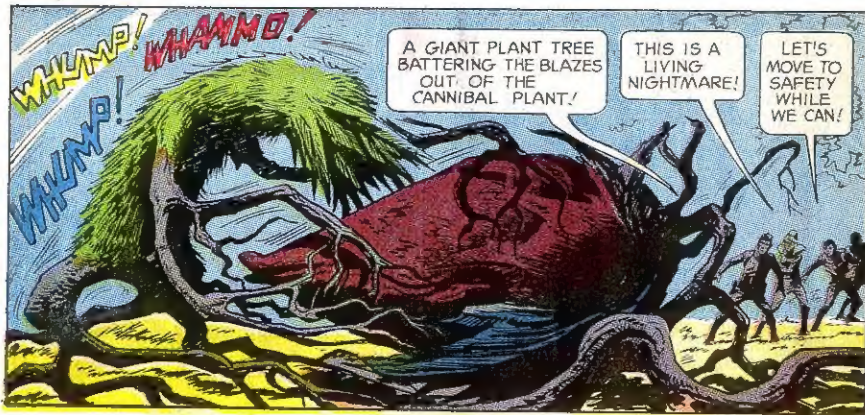


SUDDENLY...

THERE'S YOUR ANSWER! LOOK!

THE SUCTION FORCE... IT'S SUDDENLY STOPPED! BUT, WHY?



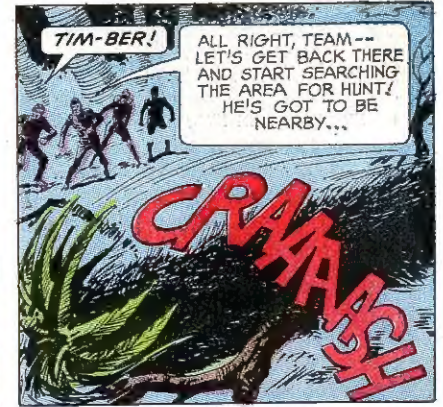


**WHUMP! WHAMP!**  
**WHAMP!**

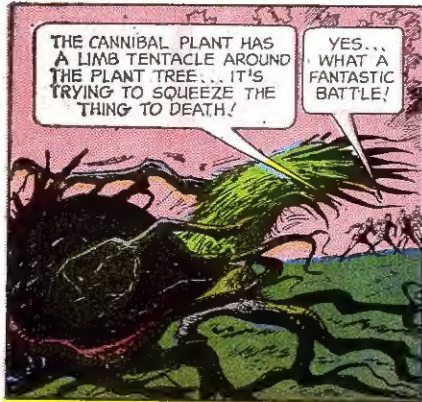
A GIANT PLANT TREE BATTERING THE BLAZES OUT OF THE CANNIBAL PLANT!  
THIS IS A LIVING NIGHTMARE!  
LET'S MOVE TO SAFETY WHILE WE CAN!



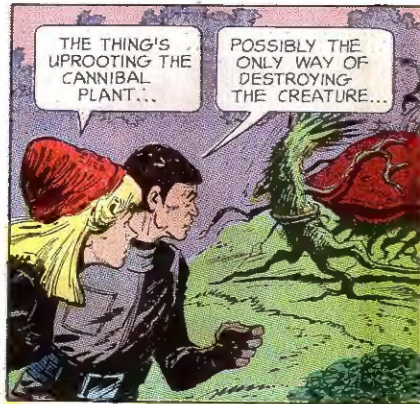
THE PLANT TREE... IT'S WAVERING...  
THE BATTLE MUST HAVE BEEN TOO MUCH FOR IT... IT EXHAUSTED ITSELF...



**TIM-BER!**  
ALL RIGHT, TEAM-- LET'S GET BACK THERE AND START SEARCHING THE AREA FOR HUNT! HE'S GOT TO BE NEARBY...



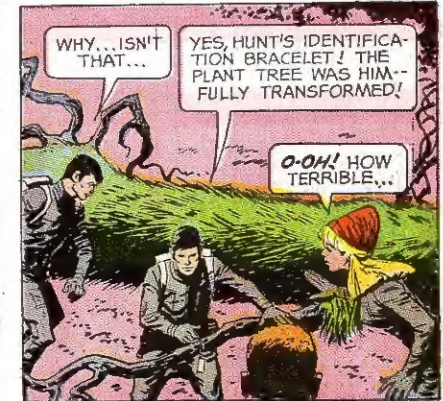
THE CANNIBAL PLANT HAS A LIMB TENTACLE AROUND THE PLANT TREE... IT'S TRYING TO SQUEEZE THE THING TO DEATH!  
YES... WHAT A FANTASTIC BATTLE!



THE THING'S UPROOTING THE CANNIBAL PLANT...  
POSSIBLY THE ONLY WAY OF DESTROYING THE CREATURE...



I'LL CHECK OUT THAT SIDE OF THE CLEARING...  
WAIT! THAT... WON'T BE NECESSARY, DEAN! I'VE... I'VE FOUND HUNT!



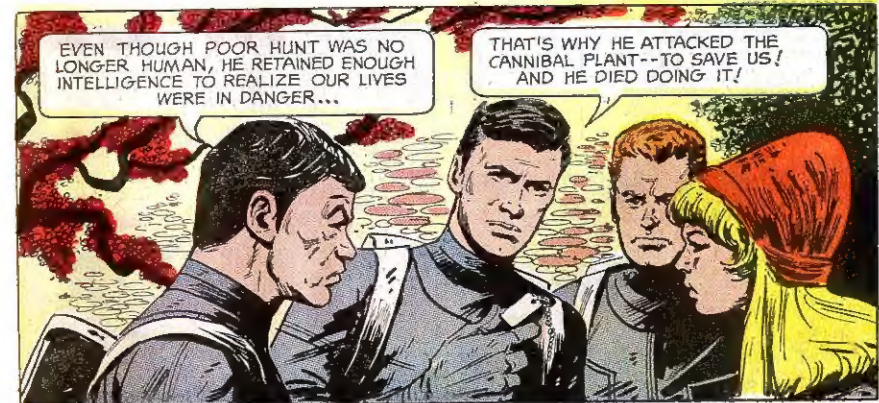
WHY... ISN'T THAT...  
YES, HUNT'S IDENTIFICATION BRACELET! THE PLANT TREE WAS HIM-- FULLY TRANSFORMED!  
O-OH! HOW TERRIBLE...



TEAM! IN THE CONFUSION WE'VE LOST POOR HUNT! HE WASN'T INFLUENCED BY THE SUCTION FORCE... ANYONE SEE WHAT HAPPENED TO HIM...?  
LOOK! THE PLANT TREE'S ABOUT TO ADMINISTER THE COUP DE GRACE!



WOW! WHAT A GROUND WALLOPING-- SCRATCH ONE CANNIBAL PLANT!



EVEN THOUGH POOR HUNT WAS NO LONGER HUMAN, HE RETAINED ENOUGH INTELLIGENCE TO REALIZE OUR LIVES WERE IN DANGER...  
THAT'S WHY HE ATTACKED THE CANNIBAL PLANT-- TO SAVE US! AND HE DIED DOING IT!





PERHAPS IT'S FOR THE BEST. THAT HE SHOULD HAVE DIED WHILE THERE WAS STILL **SOMETHING** OF HUNT LEFT IN HIM!

GUESS YOU'RE RIGHT, DOC! WELL, WE'VE GOT A DUTY TO PERFORM...



SHORTLY, A GRIM FOURSOME STANDS OVER A SHALLOW GRAVE WHERE...

SO LONG, HUNT... AND WE ALL THANK YOU FOR OUR LIVES!

SOB! SOB!



A-A COMMUNITY OF VEGETATION... HOUSES... BUILDINGS... JUST AS WE HAVE ON EARTH!

FANTASTIC! THIS PLANT LIFE AN **INTELLIGENT SOCIETY** -- LISTEN! THEY'RE ACTUALLY COMMUNICATING WITH ONE ANOTHER! -- LET'S GO DOWN FOR A CLOSER LOOK...



SOON AFTER, WHEN THE GRIM WORD IS RADIO-TV'D TO THE **USS ENTERPRISE**...

A PITY--HUNT WAS A GREAT SPACEMAN... WE'LL MISS HIM! GIVE ME YOUR DEPARTURE TIME, CAPTAIN-- AND I WILL HAVE THE MATERIALIZATION BEAMS ACTIVATED!

NO... WE'RE **NOT** RETURNING TO THE SHIP IMMEDIATELY, MR. SPOCK!



YOU CANNOT BE SERIOUS! IT IS NOW QUITE OBVIOUS THAT PLANET K-G IS IN SOME WAY RESPONSIBLE FOR THIS TRANSFORMATION PHENOMENON! YOU ARE **ALL** IN DANGER THERE...



**SUDDENLY...**

THE TREES... THEY'RE MOVING... CLOSING IN ON US!

PROBABLY SENTRIES! START TRIGGERING... WE'VE GOT TO BLAST OUR WAY OUT OF THIS FIX!



PERHAPS WE CAN FIND THE KEY TO THIS FREAK OCCURRENCE HERE! MEANWHILE, CONTINUE TO RUN YOUR ANALYSIS ON THOSE TREE SPECIMENS!

VERY WELL... YOU ARE THE CAPTAIN!



RECOVERING THEIR WEAPONS, THE FOURSOME MOVES THROUGH THE OMINOUS FOLIAGE WITHOUT INCIDENT! THEN...

LOOK AT THAT!

INCREDIBLE!

I-I CAN SCARCELY BELIEVE MY EYES!



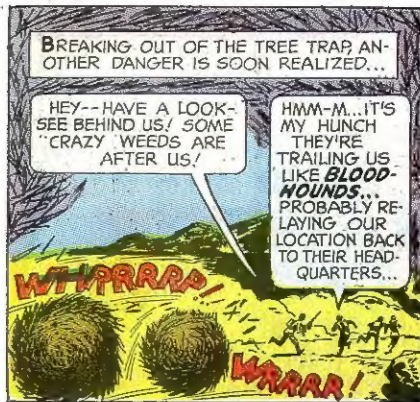
CONCENTRATE OUR FIRE ON ONE SPECIFIC AREA... OPEN A HOLE IN THEIR RANKS BIG ENOUGH TO SLIP OUT OF HERE...



THE CONCENTRATED BARRAGE OF RAY FIRE SOON PAYS OFF AND...

WE'VE GOT OUR HOLE--NOW TO GET THROUGH IT! ZERO IN ON THOSE GRASPING TREE LIMBS--IF ONE OF THEM SNARES YOU YOU'RE **FINISHED!**





BREAKING OUT OF THE TREE TRAP, ANOTHER DANGER IS SOON REALIZED...

HEY-- HAVE A LOOK-- SEE BEHIND US! SOME "CRAZY WEEDS ARE AFTER US!

HMM-M... IT'S MY HUNCH THEY'RE TRAILING US LIKE BLOOD-HOUNDS... PROBABLY RELAYING OUR LOCATION BACK TO THEIR HEAD-QUARTERS...

WTFPRRAA!  
KRAAA!



WE'LL NEVER GET OUT OF HERE WITH THEM ON OUR TAILS-- BLAST THEM TO PIECES!

YOU HIT EVERYONE IN SIGHT, CAPTAIN-- GOOD SHOOTING!

ZAAA!  
ZAAA!  
ZAAA!



SUDDENLY, THE CRAWLING, VINE THING REARS LIKE A COBRA BEHIND THE FOURSOME...



... AND STRIKES...

OH-H!

G-GREAT HANNAH!



I- I'M EXHAUSTED...

STEADY, HONEY-- I KNOW IT'S BEEN ROUGH...

THINK I SEE A CAVERN UP AHEAD! PERHAPS WE CAN CATCH A BREATH OR TWO IN THERE...



TENSE MINUTES LATER, WITHIN A SMALL MOUNTAIN CAVERN...

LET'S FACE IT, CAPTAIN-- WE'RE TOO LITTLE IN NUMBER AND FIRE POWER TO FIGHT THIS... THIS INCREDIBLE NATION OF VEGETATION! WE MUST RETURN TO THE ENTERPRISE!

I READ YOU, DOCTOR-- AND YOU'RE RIGHT!



THE BESTIAL PLANT WHIPLASHES BACK WITH ITS PREY...

G-GRAB HER... QUICK!

Wiiii SH!

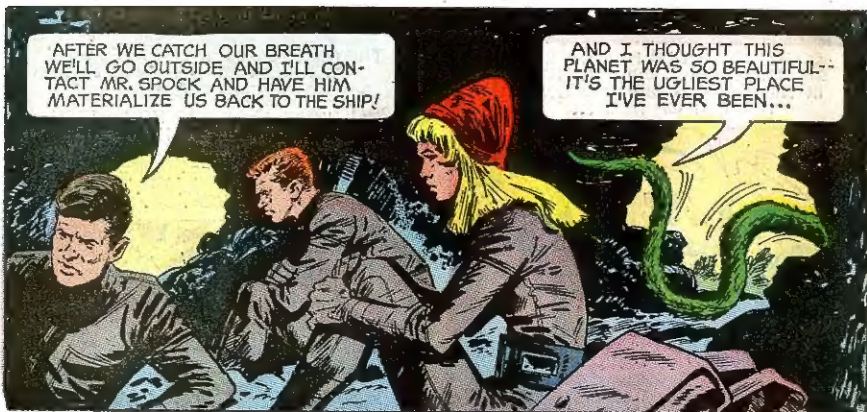


THEN...

C-CAN'T HANG ON... IT'S STRONG AS A... A STEEL CABLE!

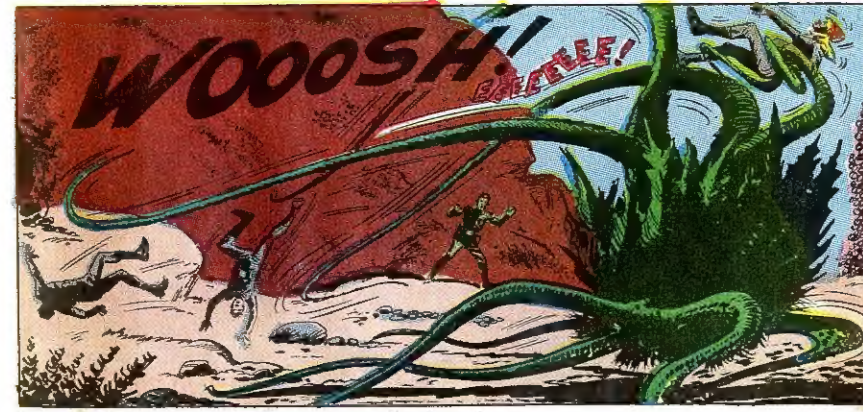
A-AND LASHING... LIKE A BULL WHIP...

Swoosh!



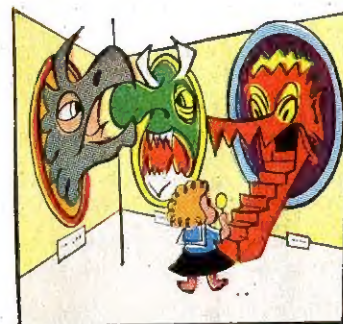
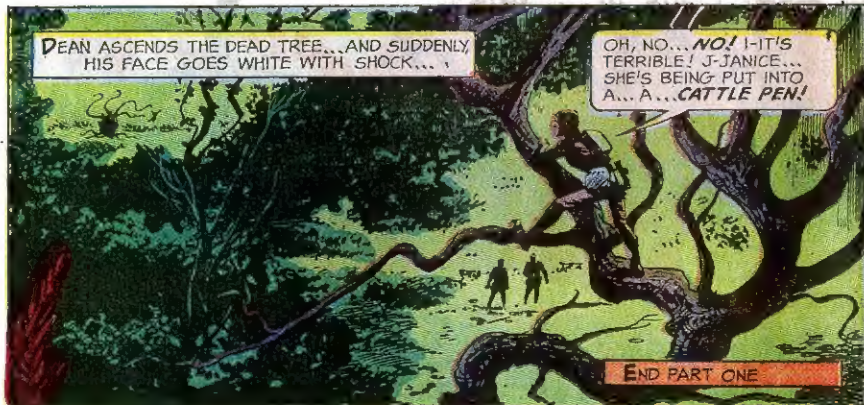
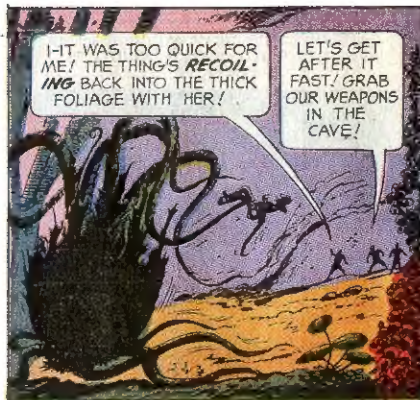
AFTER WE CATCH OUR BREATH WE'LL GO OUTSIDE AND I'LL CONTACT MR. SPOCK AND HAVE HIM MATERIALIZE US BACK TO THE SHIP!

AND I THOUGHT THIS PLANET WAS SO BEAUTIFUL-- IT'S THE UGLIEST PLACE I'VE EVER BEEN...



WOOOSH! BATTLE!



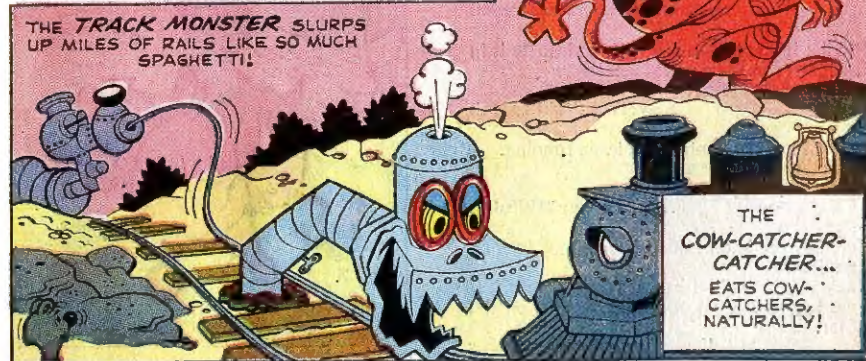
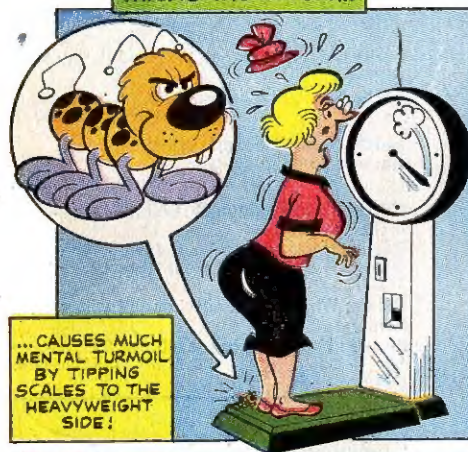


# MONSTER MUSEUM

Our Monster Museum is a pretty busy place these days, what with *one monster after another* claiming recognition and trying to out-scare each other. We hope you enjoy this collection.

© 1967 BY WESTERN PUBLISHING COMPANY, INC.

**THE LEAD-TOED MICRO-MONSTER...**





# Jest for Fun



**Riddle:** What belongs to you that your friends use more often than you do?  
**Answer:** Your name.

Linda Sargent—Escondido, Calif.

**Riddle:** How can you tell there's an elephant under your bed?  
**Answer:** The ceiling is very close.

Ray Walden, Chester, Connecticut

**Riddle:** What has 10 legs 10 heads and 5 feet?  
**Answer:** I don't know I asked you.

Frank Fernandez, Roselle, New Jersey

**Bob:** One day a lady was fishing in her yacht and fell out. Why didn't the sharks eat her?  
**Rob:** I don't know, Why?

**Bob:** They were man eating sharks.  
 Jeff Buchanan, Greenhills, Ohio

**Riddle:** When can you tell a ghost has a cold?  
**Answer:** When he is in his coffin.

Leon Bessonette, Holyoke, Massachusetts

**Riddle:** If you took a red rock and threw it in the black sea, what would you have?  
**Answer:** A Wet Rock.

Nancy Folkerts, Marietta, Georgia

**Mack:** I lost my pants when I was running.  
**Tom:** Were they loose?

**Mack:** No, but your dog was.  
 Joy L. Poole, Council Bluffs, Iowa

**Joe:** Did you know I don't have all my toes on one foot?  
**Jack:** No, How did it happen?

**Joe:** I have five on one foot and five on the other.

Linwood Erickson, Delmont, New Jersey

**Boy:** Wonder what was the biggest moving job ever done?

**Girl:** I'll bet it was Wheeling, West Virginia!  
 Janet Jordan—Lompoc, Calif.

**Jimmy:** Remember, the letter U always comes after the letter Q.

**Timmy:** Not in my dictionary! R comes after Q.

Jeremy Vogel—Brooklyn, N.Y.

**Mike:** What is hair?

**Vicke:** Ear-to-ear carpeting!  
 Vickie Silvey—Paducah, Ky.

**Jack:** Would you rather be in a collision or an explosion?

**Jill:** A collision, of course! In a collision, there you are! But in an explosion, where are you?  
 Diodati Frank—Montreal, Que., Canada

**Riddle:** When is a man like a piece of wood?  
**Answer:** When he becomes a ruler!

Curtis Lippe—Philadelphia, Pa.

**Lorie:** Did anyone laugh at you when you fell on the ice?

**Larry:** No, but the ice made some bad cracks!  
 Ann Hertelendy—Louisville, Ky.

**Riddle:** When is a door not a door?

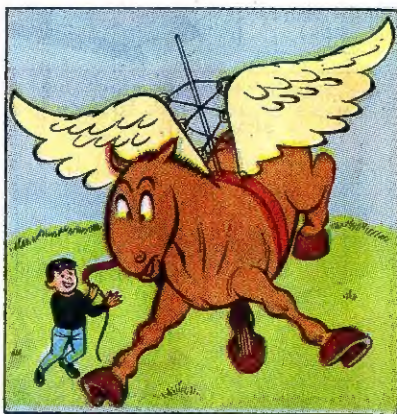
**Answer:** When it is a-jar!  
 Cris and Lisa Miller—Walla Walla, Wash.

**Nurse:** Do you want me to boil the instruments, doctor?

**Doctor:** No, let's fry them today!  
 Donald Reinke—Cleveland, Ohio

**Riddle:** Why did the city boy put wings on a horse?

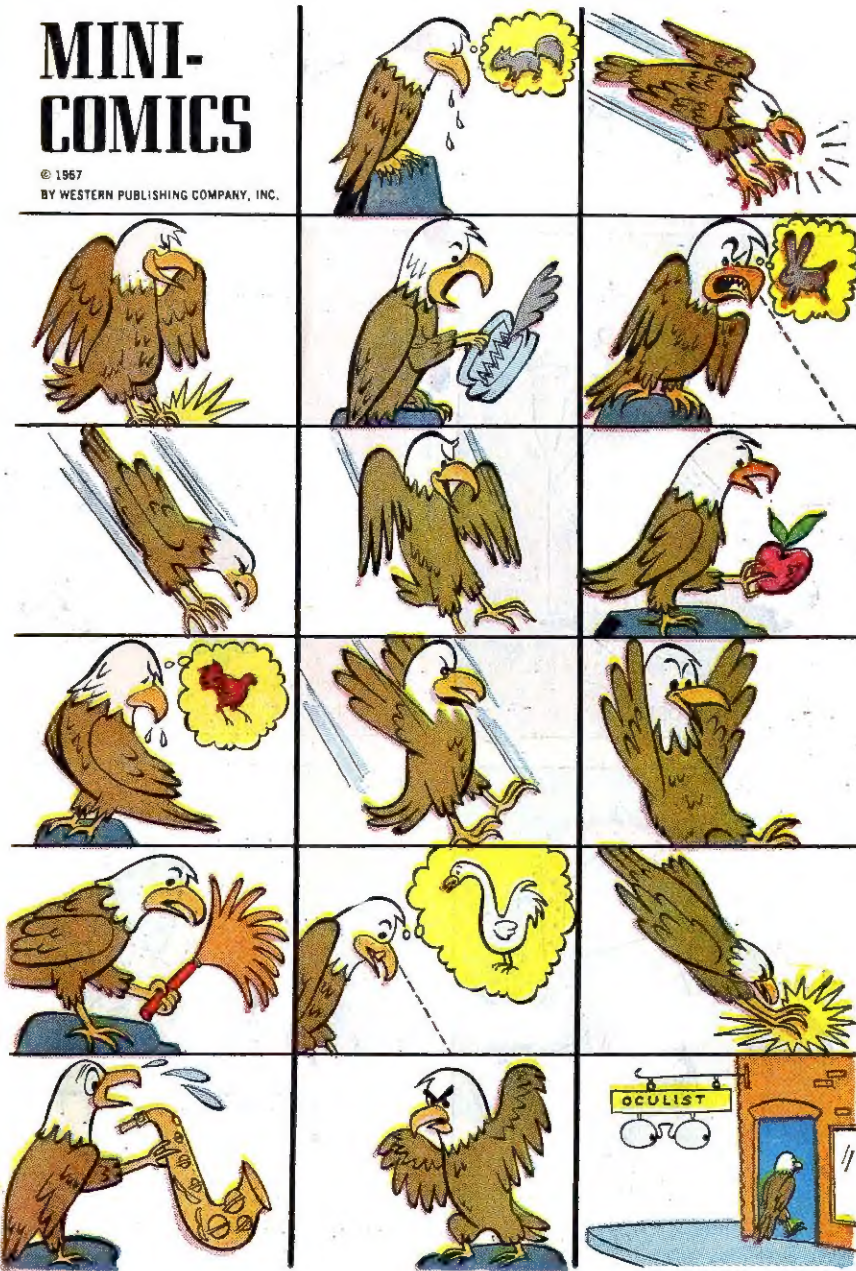
**Answer:** He wanted to see a horse fly!  
 David Weisel—Hartford, Conn.



# MINI-COMICS

© 1967

BY WESTERN PUBLISHING COMPANY, INC.





# CHUCKLE TIME

© 1967 BY WESTERN PUBLISHING COMPANY, INC.



"FORE!"



"I've seen spoiled kids, but this is ridiculous!"



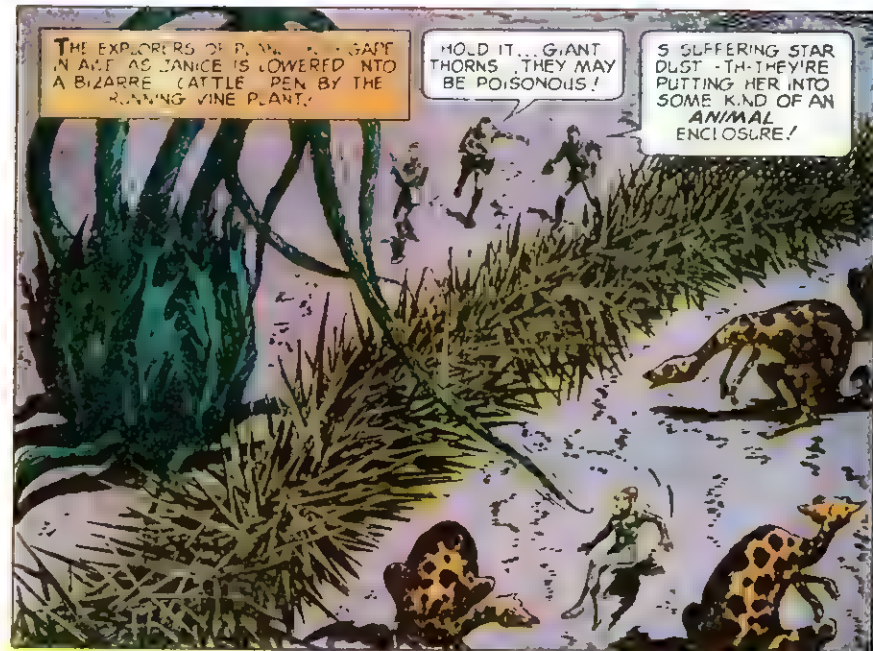
"Do you mind?"



"Is that you, Mom?"

STAR TREK

# THE PLANET OF NO RETURN PART II



THE EXPLORERS OF PLANET... GAVE IN AS JANICE IS LOWERED INTO A BIZARRE CATTLE PEN BY THE RUNNING VINE PLANT.

HOLD IT... GIANT THORNS... THEY MAY BE POISONOUS!

SUFFERING STAR DUST... THEY'RE PUTTING HER INTO SOME KIND OF AN ANIMAL ENCLOSURE!

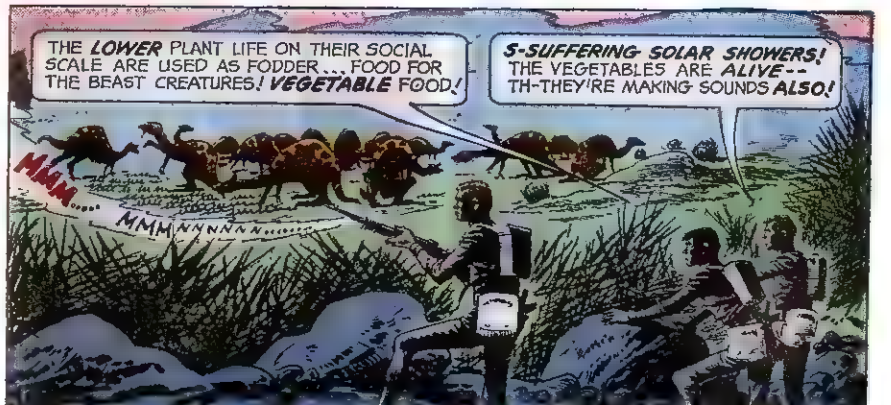
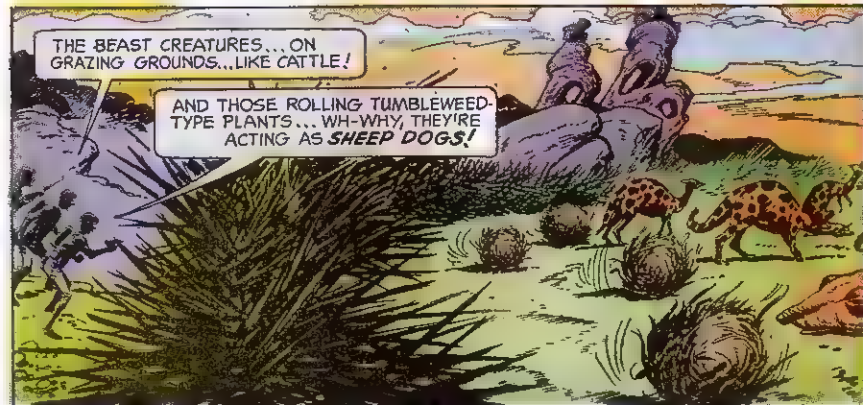
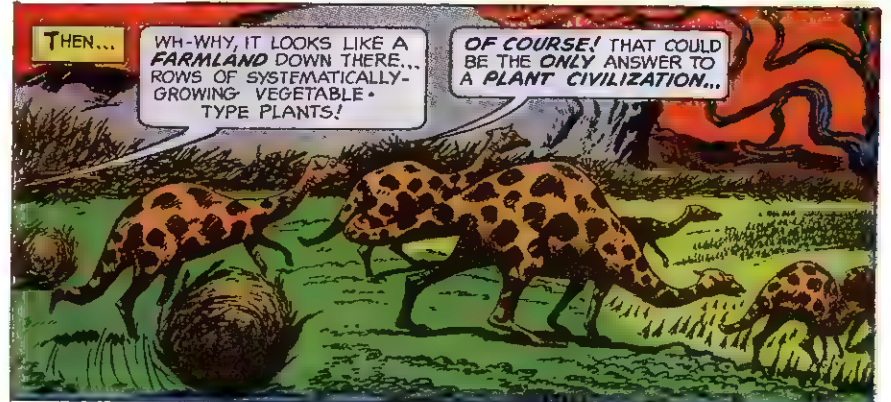
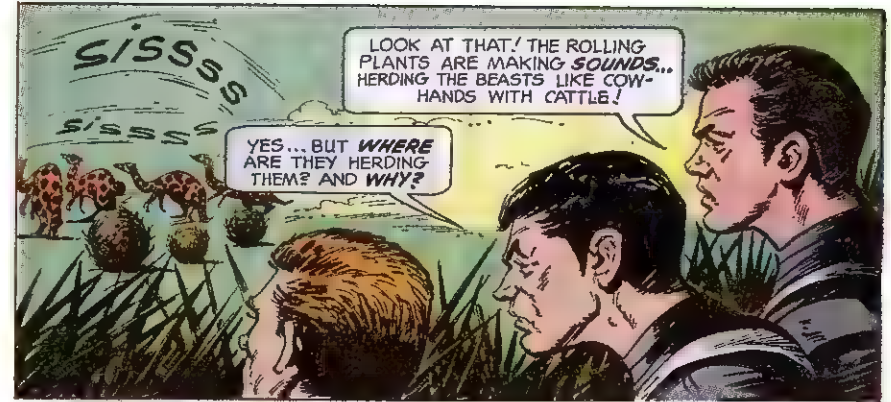
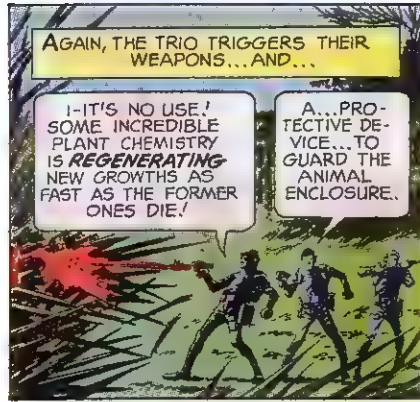
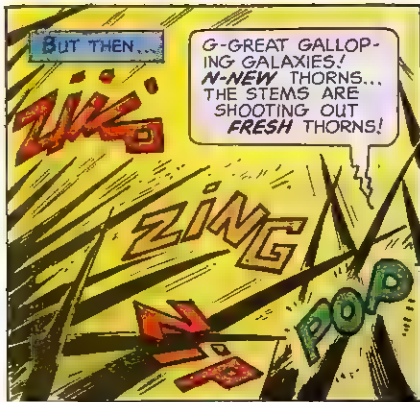


HURRY! BEAST! A PATH THROUGH THIS THORN ENTANGLEMENT! JANICE IS TRAPPED AND A HORDE OF PLANETARY BEASTS!

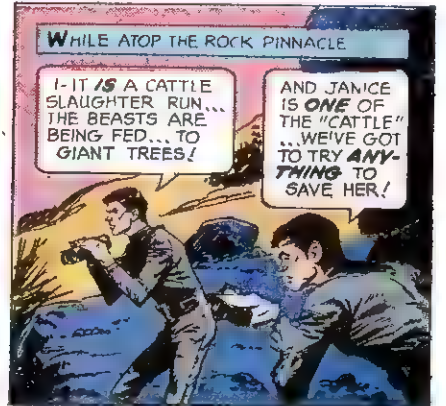
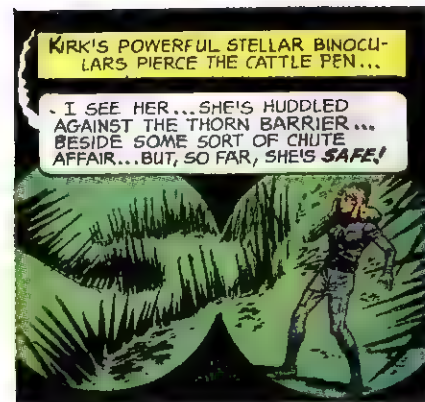
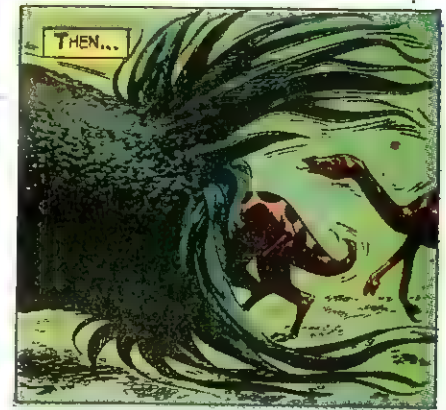
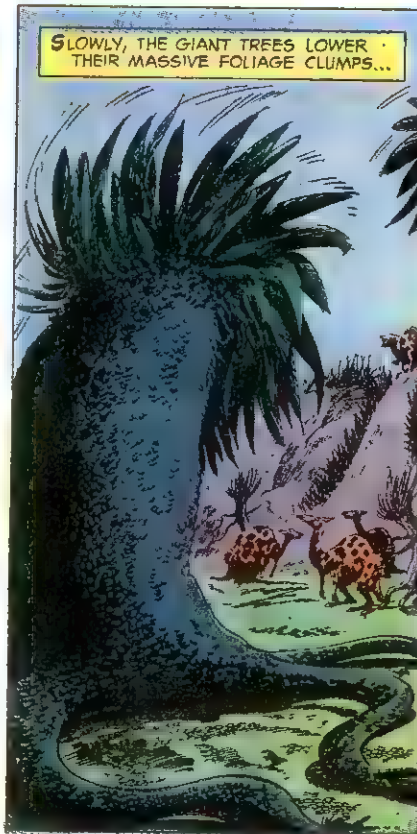
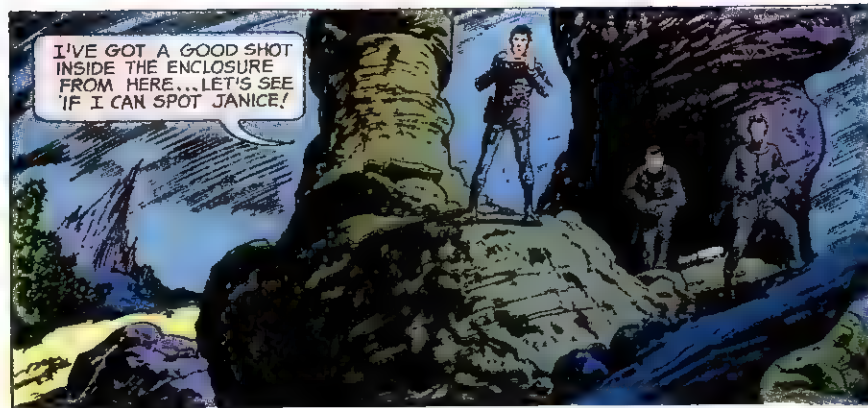
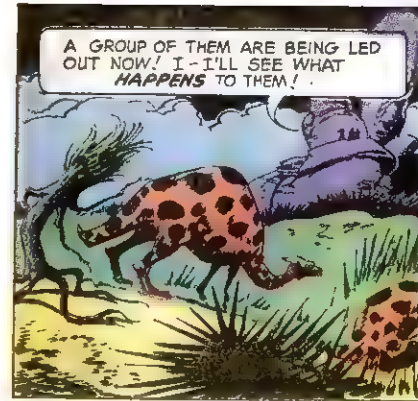
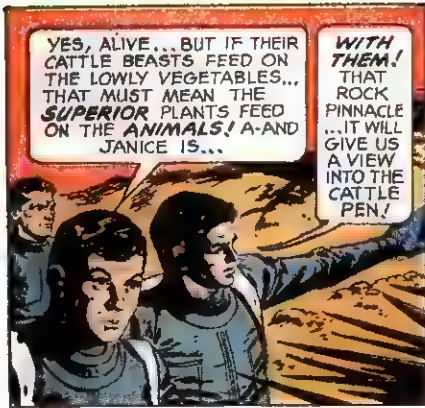


THAT'S A BIG ENOUGH HOLE... LET'S MOVE!

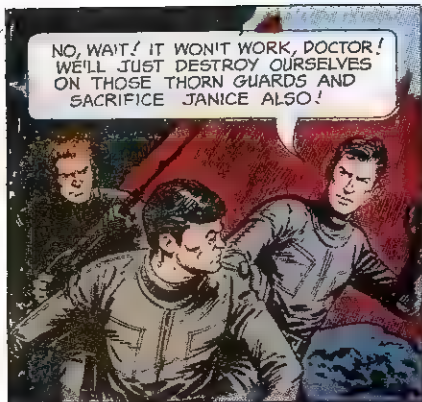












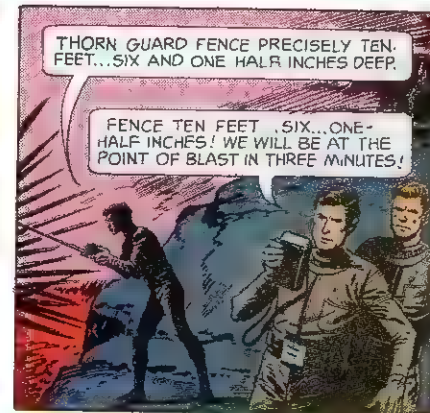
NO, WAIT! IT WON'T WORK, DOCTOR! WE'LL JUST DESTROY OURSELVES ON THOSE THORN GUARDS AND SACRIFICE JANICE ALSO!



ONLY MR. SPOCK ON THE ENTERPRISE CAN HELP JANICE NOW!

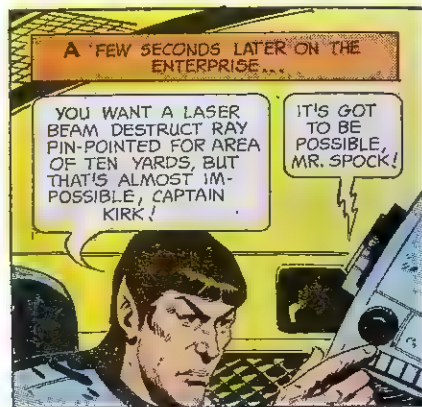


CELESTIAL LONGITUDE 2,118...  
LATITUDE, 145 9...



THORN GUARD FENCE PRECISELY TEN FEET... SIX AND ONE HALF INCHES DEEP.

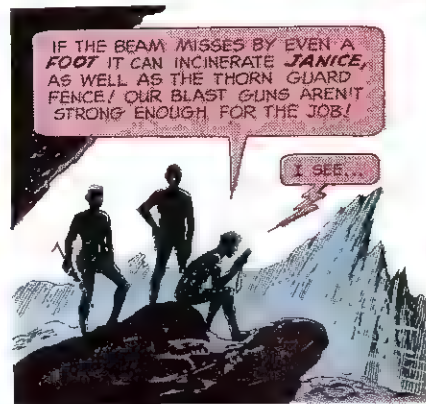
FENCE TEN FEET .SIX...ONE-HALF INCHES! WE WILL BE AT THE POINT OF BLAST IN THREE MINUTES!



A FEW SECONDS LATER ON THE ENTERPRISE...

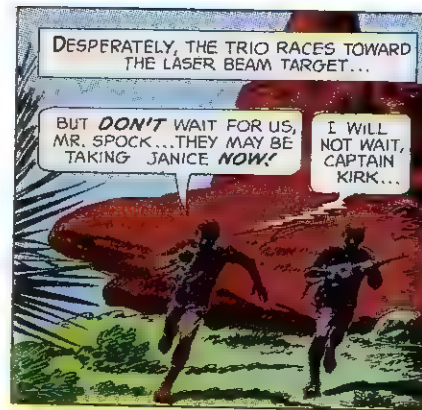
YOU WANT A LASER BEAM DESTRUCT RAY PIN-POINTED FOR AREA OF TEN YARDS, BUT THAT'S ALMOST IMPOSSIBLE, CAPTAIN KIRK!

IT'S GOT TO BE POSSIBLE, MR. SPOCK!



IF THE BEAM MISSES BY EVEN A FOOT IT CAN INCINERATE JANICE, AS WELL AS THE THORN GUARD FENCE! OUR BLAST GUNS AREN'T STRONG ENOUGH FOR THE JOB!

I SEE...



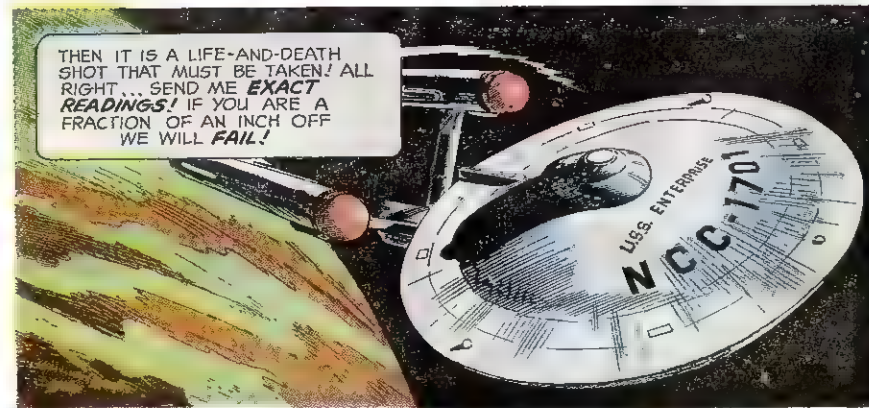
DESPERATELY, THE TRIO RACES TOWARD THE LASER BEAM TARGET...

BUT DON'T WAIT FOR US, MR. SPOCK...THEY MAY BE TAKING JANICE NOW!

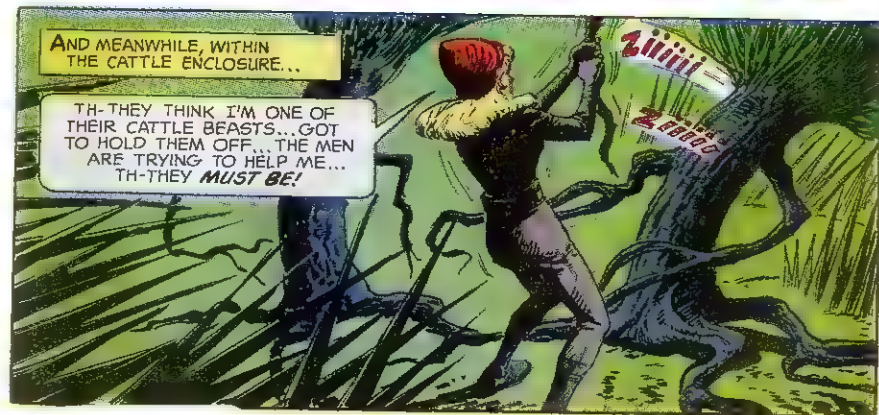
I WILL NOT WAIT, CAPTAIN KIRK...



... BUT I WILL NEED PRECIOUS SECONDS TO COMPUTE THE ENTERPRISE'S PRECISE POSITION RELATIVE TO TARGET!



THEN IT IS A LIFE-AND-DEATH SHOT THAT MUST BE TAKEN! ALL RIGHT... SEND ME EXACT READINGS! IF YOU ARE A FRACTION OF AN INCH OFF WE WILL FAIL!



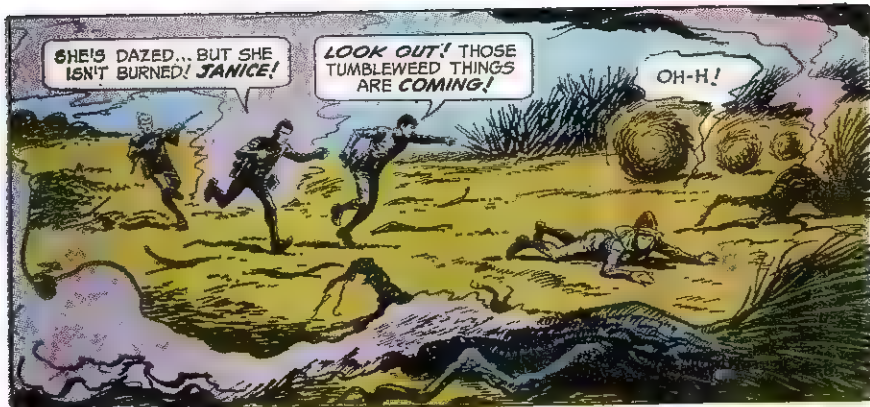
AND MEANWHILE, WITHIN THE CATTLE ENCLOSURE...

TH-THEY THINK I'M ONE OF THEIR CATTLE BEASTS...GOT TO HOLD THEM OFF...THE MEN ARE TRYING TO HELP ME... TH-THEY MUST BE!





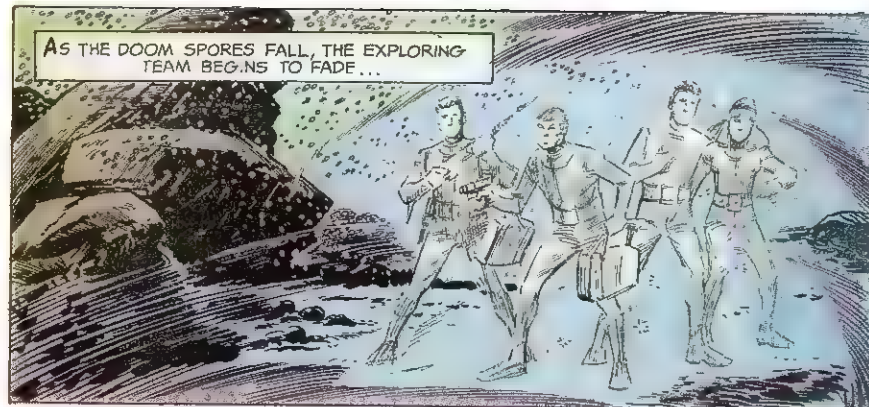




SHE'S DAZED... BUT SHE ISN'T BURNED! **JANICE!**

**LOOK OUT! THOSE TUMBLEWEED THINGS ARE COMING!**

OH-H!



AS THE DOOM SPORES FALL, THE EXPLORING TEAM BEGINS TO FADE...



**BLAST-RAY THEM OFF! I'LL GET HER OUTSIDE THE BARRIER!**

RIGHT!



ZAP

Woooo!



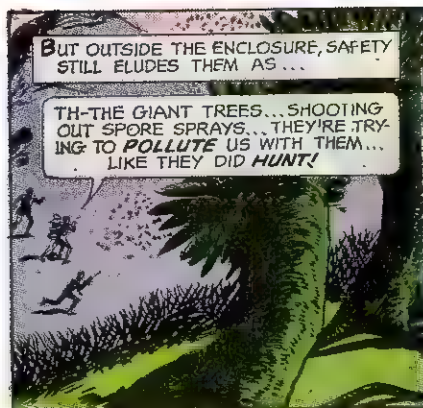
THEN...

Orooooo



AND ABOARD THE STAR SPACE-SHIP ENTERPRISE...

TH-THANK A THOUSAND STAR HEAVENS! THEY **MADE IT!**



BUT OUTSIDE THE ENCLOSURE, SAFETY STILL ELUDES THEM AS...

TH-TH THE GIANT TREES... SHOOTING OUT SPORE SPRAYS... THEY'RE TRYING TO **POLLUTE** US WITH THEM... LIKE THEY DID **HUNT!**



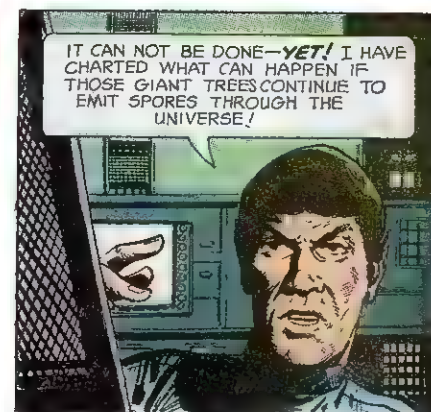
WE HAVE HER SAFE! MATERIALIZE US ABOARD AT **ONCE**, MR. SPOCK! GIANT TREES ARE TRYING TO **GERMINATE** US! **HURRY! HURRY!**



OH, MR. SPOCK... LET'S GET **AWAY** FROM THIS DREADFUL PLANET AT **ONCE**, PLEASE!

YES! I SECOND THAT MOTION! (WHEW-W!)

NO!

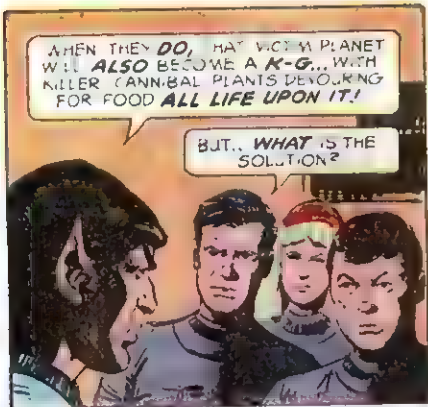


IT CAN NOT BE DONE—**YET!** I HAVE CHARTED WHAT CAN HAPPEN IF THOSE GIANT TREES CONTINUE TO EMIT SPORES THROUGH THE UNIVERSE!



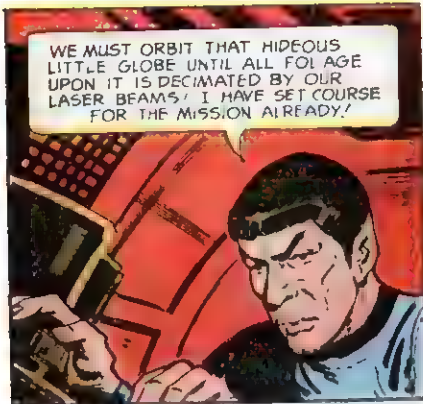


"THEY MAY FLOAT THROUGH SPACE FOR CENTURIES, EVEN THOUSANT YEARS... BUT SOME DAY SOMEWHERE THEY CAN STRIKE OTHER PLANETS."

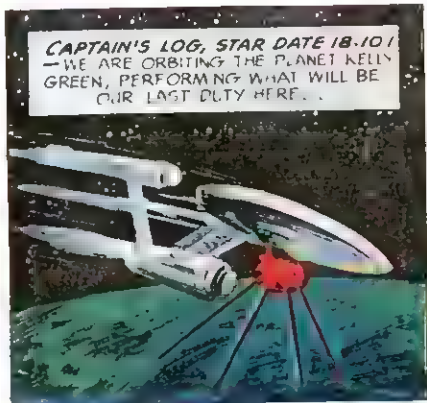


WHEN THEY DO, MAY VICTIM PLANET WILL ALSO BECOME A K-G... WITH KILLER CANNIBAL PLANTS DEVOURING FOR FOOD ALL LIFE UPON IT!

BUT... WHAT IS THE SOLUTION?



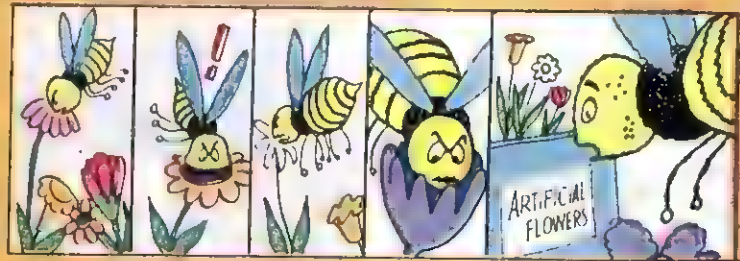
WE MUST ORBIT THAT HIDEOUS LITTLE GLOBE UNTIL ALL FOLIAGE UPON IT IS DECIMATED BY OUR LASER BEAMS! I HAVE SET COURSE FOR THE MISSION ALREADY!



CAPTAIN'S LOG, STAR DATE 18-101  
—WE ARE ORBITING THE PLANET KELLY GREEN, PERFORMING WHAT WILL BE OUR LAST DUTY HERE...

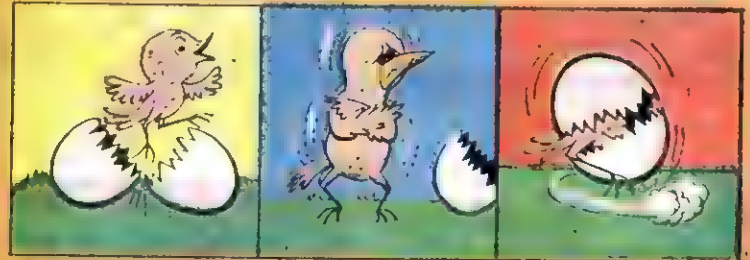


TOTAL DESTRUCTION — A MISSION THAT MUST BE FULFILLED BEFORE WE CAN CONTINUE OUR TOUR OF RESEARCH THROUGH THE VAST REACHES OF THE UNIVERSE...



# QUICK TAKES

© 1967 BY WESTERN PUBLISHING COMPANY, INC.

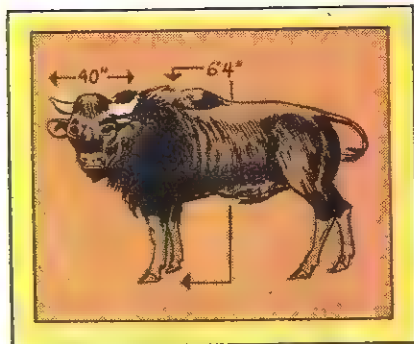




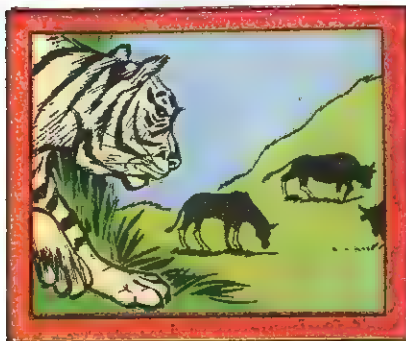
# picture dictionary

# G GAUR

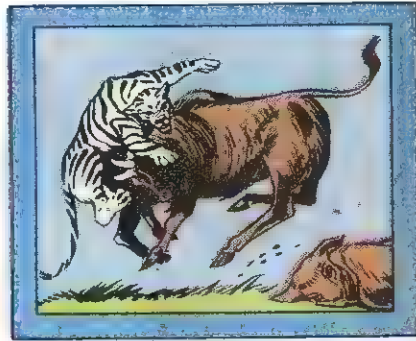
© 1967 BY WESTERN PUBLISHING COMPANY, INC.



The GAUR, of India is the largest of the world's wild oxen and standing 6 feet 4 inches tall . . . He ranges to Viet Nam.



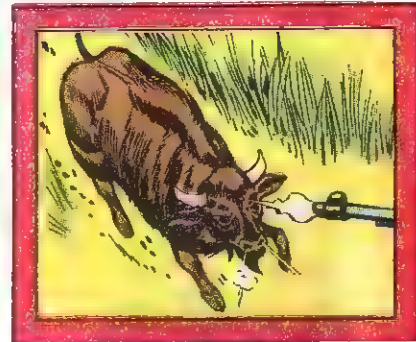
The Gaurs graze on jungly hillsides, and their only enemies are the great cats which prey on and kill the sick and small calves.



The largest tiger is no match for a full grown bull Gaur, however, and the calf killer risks a most deadly vengeance.



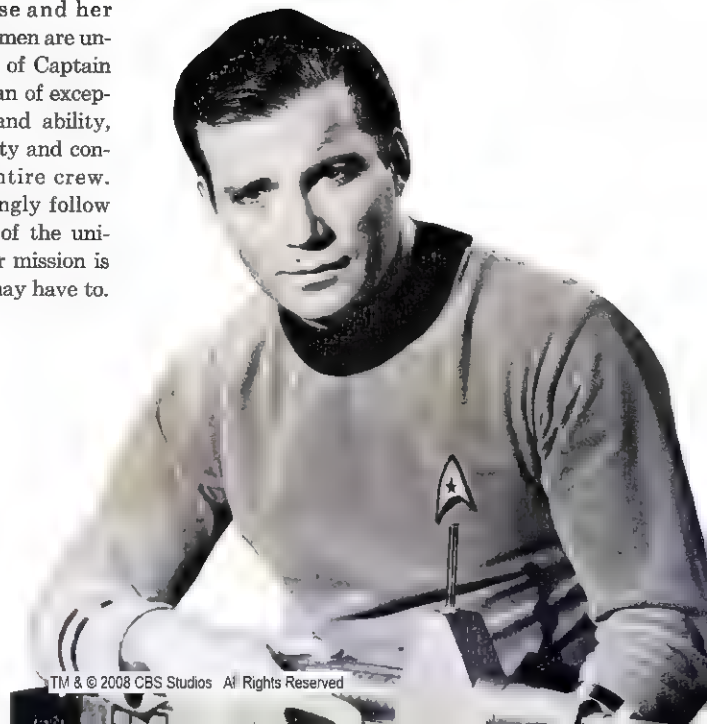
A wounded Gaur, like the African Cape buffalo, is known to ambush his hunter and then charge suddenly from a thicket.



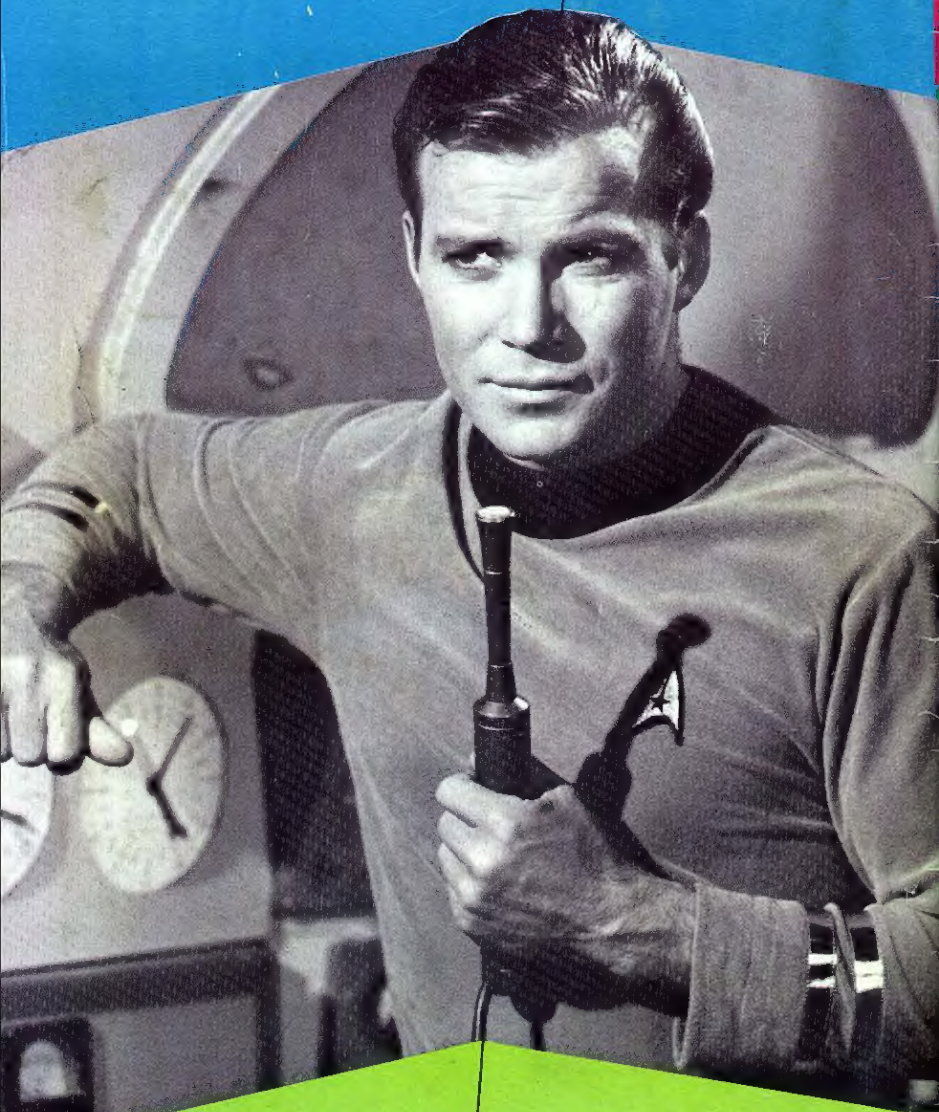
The lone bulls expelled from the herd by younger and stronger rivals—turn man killers and give many hunters a bad time!



The Enterprise and her thousands of crewmen are under the command of Captain James Kirk. A man of exceptional character and ability, he holds the loyalty and confidence of the entire crew. They would willingly follow him to the ends of the universe. Before their mission is completed, they may have to.







**STAR TREK**  
PIN-UP



DCJ would like to thank all scanners; past, present and future

*[Faint, illegible handwritten text in a cursive script, likely bleed-through from the reverse side of the page.]*



50,000 scans and counting

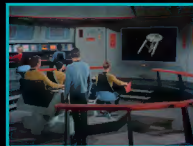
*[Faint, illegible handwritten text in a cursive script, likely bleed-through from the reverse side of the page.]*

*[Small handwritten signature or mark in the bottom right corner.]*





DISCOVERY-DCP





# LIKE IT? BUY IT!

If you enjoyed this issue,  
then consider buying it.

Support the industry. \* Support your local retailers.

